



# PRODUCT DATA SHEET

## MapXtreme®

ENABLES APPLICATION DEVELOPMENT  
OF MAP-CENTRIC OR MAP-ENABLED  
APPLICATIONS FOR USE THROUGHOUT AN  
ORGANIZATION

## Product Overview

MapXtreme® is the leading software development kit (SDK) for integrating location intelligence with existing business systems. MapXtreme enables you to create custom mapping applications for deployment in both Microsoft® Windows® desktop and web environments.

Organizations in both the public and private sectors use mapping and location-based decision and analysis support systems to make better strategic decisions. With applications developed in MapXtreme, your organization can visualize and analyze data to discover new relationships and trends not apparent using traditional methods such as spreadsheets and reports.

## Benefit

MapXtreme's powerful spatial capabilities are geared toward solving real business problems, with a powerful, user-friendly, and feature-rich set. Designed for Microsoft Windows programmers who are familiar with the Microsoft .NET development environment, the MapXtreme SDK enables you to develop applications and solutions that incorporate location intelligence within your existing systems and infrastructure. It provides you with the ability to develop desktop or web solutions for smart-client, client server, intranet/extranet or mixed environments.

Other features and functions include:

- Complies with both geospatial and IT industry standards ensuring interoperability
- Incorporation of location capabilities such as geocoding and routing within your application
- New extensible architecture enables you to write your own data provider, extending data access to virtually any source
- Built-in extensible user interface toolbars and dialogue facilities for rapid development
- Additional functionality through improved granularity
- Enhanced flexibility of display options including curved labeling, improved symbology and fill patterns
- New grid capabilities allow you to create continuous grids using a writable grid handler and new IDW and TIN interpolators
- New API and Dialog additions allow modifications to inflection points for continuous grids

## EXPECTED ROI

Developers can use this powerful location intelligence software to build custom mapping applications, provide tailored views of geographic data, and automate and augment business processes.

By adding location, mapping and analysis capabilities into .NET Web-facing or internal applications as part of day-to-day operational and analysis, organizations can:

- Make more informed business decisions
- Improve customer services
- Augment facility and asset management
- Enhance planning and organizational responsiveness

## Added Value

### Make Better Strategic Decisions

- Where to best market and sell
- How to best manage and protect physical assets
- Determine the most efficient transportation of products

### Deliver Mapping Applications for One to Many Users

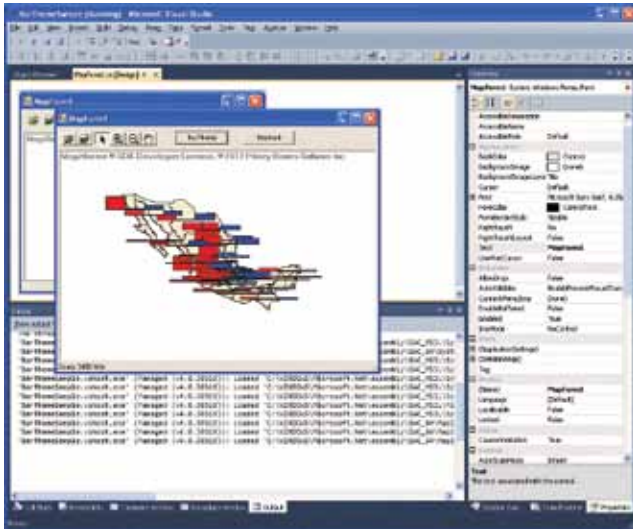
- Customers can see coverage areas or find nearest locations
- Engineers can spot network disruptions and notify customers
- Sales and service reps can get directions to their next call

### Share Location Intelligence Across the Organization

- Access original enterprise databases and varied data formats
- Manage growing web traffic with highly scalable architecture
- Turn spatial information into a valuable corporate asset

### Flexible Deployment Options

- Single SDK product for the development of both web and desktop applications
- Includes numerous map application templates that automatically configure and load the mapping environment for the deployment type chosen
- Access data “where it lives” within your organization using standard data access protocols including ADO.NET, ODBC, Oracle® Spatial and SQL Server®
- Provides full support for Microsoft.NET languages such as VisualBasic.Net and C#, and facilitates the rapid development of web applications for all web deployable .NET languages, such as ASP.NET
- Localization kit allows applications to be developed in multiple languages



*MapXtreme is tightly integrated with Microsoft Visual Studio IDE. Developers familiar with C# or VB.NET programming will be able to get their applications up and running quickly.*

# PRODUCT DATA SHEET

## NEW KEY FEATURES

- Grid Analysis
- Linear Referencing and Dynamic Segmentation
- Z and M Values
- Improved Performance of Shapefiles
- Extensible Data Provider
- Extensible Workspace Manager
- Tile Handler API
- New Projections

## Specifications

### Supported Environments

MapXtreme supports a wide variety of spatial and non-spatial databases and file formats. Formats that are not natively supported may be added into the extensible data provider architecture.

### Databases

- Microsoft SQL Server 2008, 2012
- Oracle 11g, 10g
- Microsoft Access 2003, 2007

### Operating Systems

- 32 and 64-bit architecture
- Windows 7, 2003, 2008, XP, Vista

### Development Frameworks

- Microsoft .NET Framework 4.0
- Visual Studio.NET 2010 (Professional, Premium and Ultimate)
- Visual C# Samples
- VisualBasic.NET Samples

For more information call 800.327.8627 or visit us online: [www.pb.com/software](http://www.pb.com/software)

#### UNITED STATES

800.327.8627

[pbsoftware.sales@pb.com](mailto:pbsoftware.sales@pb.com)

#### CANADA

800.268.3282

[pbsoftware.canada.sales@pb.com](mailto:pbsoftware.canada.sales@pb.com)

#### EUROPE/UNITED KINGDOM

+44.800.840.0001

[pbsoftware.emea@pb.com](mailto:pbsoftware.emea@pb.com)

#### ASIA PACIFIC/AUSTRALIA

+61.2.9437.6255

[pbsoftware.australia@pb.com](mailto:pbsoftware.australia@pb.com)  
[pbsoftware.singapore@pb.com](mailto:pbsoftware.singapore@pb.com)



Every connection is a new opportunity™



Pitney Bowes Software Inc. is a wholly-owned subsidiary of Pitney Bowes Inc. Pitney Bowes, the Corporate logo, and MapXtreme are registered trademarks of Pitney Bowes Inc. or a subsidiary. All other trademarks are the property of their respective owners. © 2013 Pitney Bowes Software Inc. All rights reserved.

93482 AMER 1303